



2020-2021

MG14 NSW STATE CHAMPIONSHIP

Sat 13 - Sun 14 March 2021

**Georges River Sailing Club
*Sanoni Ave, Sandringham NSW 2219***

SAILING INSTRUCTIONS

**ORGANISING AUTHORITY
MANLY 16FT SKIFF SAILING CLUB LTD
(TRADING AS ST GEORGE SAILING CLUB)**

in association with

MG14 ASSOCIATION OF NSW INC

MG14 NSW STATE CHAMPIONSHIP

Sat 13 - Sun 14 March 2021

SAILING INSTRUCTIONS

1. RULES

The regatta will be governed by the 2021-2024 Racing Rules of Sailing (RRS), by the Prescriptions of Australian Sailing, by part 2 of the Australian Sailing Special (Safety) Regulations and by the Class Rules and By-Laws of the MG14 Association of NSW Inc., except as any of these are altered by the Sailing Instructions

2. ADVERTISING

Boats may be required to display advertising supplied by the Organising Authority.

3. ELIGIBILITY

Entries will be restricted to MG14 & MG14B dinghies registered with the MG14 Association of NSW Inc. for the 2020-2021 sailing season, and for which at least one Full Membership and one Associate Membership for the 2020-2021 season has been paid to the Association and for which a completed entry form has been submitted and the series entry fee paid to the Association prior to the close of registration.

The nominated helmsperson shall be a member of the MG14 Association of NSW Inc. The forward hand for each race must be nominated by the close of entries. Replacement of the nominated forward hand will not be approved by the Race Committee except in exceptional circumstances.

4. REGISTRATION

Registration will be conducted from 1000hrs to 1200hrs on Saturday 13th March 2021. Sign on/off will be done via St George Website (<https://stgeorgesailing.com.au/signon/>).

5. MEASUREMENT

Boats must comply with the MG14 / MG14B Class Measurements and Restrictions, including safety requirements, prior to acceptance of entry. **It is the responsibility of each entrant to ensure compliance.** Competing boats may be subject to measurement prior to the first race. The Race Committee and Technical Committee reserves the right to further inspection and measurement of any boat at any time during the series. Failure to comply may result in disqualification from a race or from the series.

6. EQUIPMENT LIMITATIONS

A boat shall only use a maximum of 2 jibs, 1 mainsail, 1 spinnaker, 1 mast, 1 boom, 1 spinnaker pole, 1 centreboard and 1 rudder in the Championship, except in cases where gear is damaged accidentally or in use and is beyond repair or unable to be repaired at that event. Details of the damaged items and of the circumstances under which the damage occurred shall be submitted in writing to the Association Measurer along with the items for inspection. Replacements through damage will be accepted at the discretion of the Association Measurer, and shall not be made without the written approval of the Association Measurer. If the Association Measurer is not present, a member of the Race Committee may substitute.

7. NOTICES TO COMPETITORS

Notices to competitors will be posted on the official Online Noticeboard - <https://stgeorgesailing.com.au/official-notice-board/>

A competitors' briefing for the series will be held at 1200hrs on Saturday 13th March 2021. Further briefings may be called by the Race Committee as required and notified on the official notice board.

15. WITHDRAWAL FROM RACE

The helmsperson of a boat withdrawing from a race must sign off as notification of their withdrawal and inform the race officials no later than 30 minutes after returning to shore.

16. COURSES

The courses for the championship are shown in APPENDIX B and are as below.

Windward Return – The gate mark will be at the bottom of the course. The top mark will be a port rounding.

The course to be sailed will be displayed on the side of the Committee Boat at the start mark.

17. MARKS

All rounding marks of the course will be inflatable conical red buoys.

The Start/Finish Mark will be an inflatable yellow conical buoy with a blue band.

18. THE START

Races will be started in accordance with RRS Rule 26. The starting line will be between a staff displaying an orange flag on the race committee vessel and the course side of the starting mark.

The starter may lay a distance buoy behind the Start Boat or between the Start Boat and the port end Starting Mark, and in this instance no boat shall pass between the distance buoy and the Start Boat at any time. A boat starting later than five (5) minutes after the starting signal will be scored DNS.

19. THE FINISH

The Finish Line will be between the staff displaying a blue flag on the race committee vessel and the course side of the finishing mark. If the Race Committee Boat has signalled “on station” (flying blue flag), any boats that cross the finish line prematurely in either direction, after the start of the race, will be scored DSQ.

20. SHORTENED COURSE

The Race Committee may shorten the course during a race by finishing at any rounding mark in accordance with 32.2.

The Race Committee may shorten the course because of insufficient wind making it likely that a majority of the fleet will not finish within the time limit or that the target time for the first boat to finish will be exceeded by 20 percent. This changes RRS 32.1(b).

21. TIME LIMIT

The time limit will be seventy minutes. If no boat completes the course within this time limit the race shall be abandoned. Should any boat finish within the time limit, the limit for the remaining boats will be 20 minutes after the first boat finishes. Boats failing to finish within the time limit will be scored DNF (Did Not Finish) without a hearing. This changes RRS Rule 35, A5.1 and A5.2.

22. TARGET TIMES

The target time for the first boat to finish the course in conditions which do not require or compel the Race Committee to shorten course will be 35 to 45 minutes. Failure to meet target times will not be grounds for redress. This changes RRS 62.1(a).

23. BACK TO BACK RACES

After finishing a race, boats should proceed to the starting area in anticipation of sailing another race ‘back to back’ unless a postponement is signalled on shore by raising of flag ‘AP’ and/or signalled on the Start Boat by raising of flags ‘AP Over H’ or ‘AP over A’ along with the MG class flag, or abandonment is signalled.

24. PENALTIES AT TIME OF INCIDENT

A boat may take a One-Turn Penalty when she may have broken a Rule of Part 2 of the RRS while racing. Alters RRS 44.1.

25. PROTESTS

Protests shall be lodged with a member of the Race Committee within 60 minutes of the finish of the last boat in the last race of the day. Protests shall be lodged in accordance with RRS Rule 60. RRS Appendix T will apply and Arbitration may be offered.

26. SUBSTITUTE COMPETITORS

No change of helmsperson will be permitted. A change of forward hand from that nominated for a race may be permitted in exceptional circumstances at the discretion of the Race Committee only if a sufficiently valid reason is given. Applications for replacement of the nominated forward hand must be made in writing to the Race Committee no later than 45 minutes prior to the start of the race, unless in exceptional circumstances the Race Committee agrees this was not possible.

27. SCORING

The low point scoring system, RRS Appendix A2, A4 and A5.3 shall apply, except that:

- Rule A5.2 is changed so that a boat that came to the starting area but did not start, did not sail the course, did not finish, retired or was disqualified shall be scored points for the finishing place one more than the number of boats that came to the starting area, and a boat that did not come to the starting area shall be scored points for the finishing place one more than the number of boats entered in the series.
- five races are scheduled for the Championship, of which three races shall be completed to constitute the Championship, and
- when fewer than four races have been completed, a boat's series score will be the total of all her race scores, and
- when four or five races have been completed, a boat's series score will be the total of her race scores excluding her worst score.

A Handicap Series will be conducted concurrently with the Championship (scratch) series.

28. PRIZES

The MG14 NSW State Champion perpetual trophy will be awarded to the 1st MG14 in the overall scratch series.

The MG14 NSW Handicap State Champion perpetual trophy will be awarded to the 1st MG14 or MG14B in the overall Handicap series.

Trophies will be awarded to the skipper and crew of the 1st, 2nd and 3rd boats in the overall scratch series and to the skipper and crew of the 1st, 2nd and 3rd boats in the overall handicap series, except that a boat awarded a scratch series trophy will not be eligible for a handicap series trophy. Other prizes may be awarded at the discretion of the organising authority.

29. HANDICAPS

Handicaps will be based on a 100 minute race fastest time and adjusted proportionally to the actual fastest time. Handicaps will be allocated by the Association Race Secretary. Penalties for 1st, 2nd, 3rd and 4th place on handicap in a race will be 4, 3, 2 and 1 minute respectively. The Race Secretary reserves the right to review any handicap, up or down, at any stage. Handicap decisions by the Race Secretary are final and not subject to overriding by the Race Committee. Any request for review shall be made in writing to the Race Secretary.

30. RACE COMMITTEE

The Race Committee will comprise the President, Secretary and Race Secretary of the MG14 Association of NSW Inc. and the PRO and 2 Race Officers from the St George Sailing Club Committee, or any of the above as shall be present and reasonably available to participate in any decision of the Race Committee.

31. PROTEST COMMITTEE

The Protest Committee shall consist of three members chosen by the Race Committee, either for the series or for an individual protest. A member of the Race Committee may be a member of the Protest Committee.

32. TECHNICAL COMMITTEE

A Technical Committee shall be appointed by the Race Committee.

33. SAFETY

All competitors and boats must comply with the safety regulations of Australian Sailing and the MG14 class rules. The Race Committee may reject or rescind the entry of a non-conforming boat and may disqualify a boat for a safety breach at any stage during the series without a Protest Hearing. This amends RRS63.1.

34. INSURANCE

All competing boats shall certify, by entering, that they carry third party liability insurance of an amount of not less than AU\$10,000,000.

35. RESPONSIBILITY / DISCLAIMER

All those taking part in the 2020-2021 MG14 NSW State Championship do so at their own risk and responsibility. St George Sailing Club and/or the MG14 Association of NSW Inc. are not responsible for the seaworthiness of a boat whose entry is accepted or the adequacy of its equipment. St George Sailing Club and the MG14 Association of NSW Inc. reserve the right to reject any entry. Attention is drawn to Fundamental Rule 3 of the Racing Rules of Sailing 2021-2024, which states that "The responsibility for a boat's decision to participate in a race or to continue racing is hers alone." The organising authority or St George Sailing Club or MG14 Association of NSW Inc., their officers, members, servants and agents will not accept any liability for material damage or personal injury or death sustained in conjunction with or prior to, during or after the event.

Junior sailors (skippers & crews) less than 16 years of age on any participating race day are required to lodge a fully completed Junior Indemnity Form which must be signed by a parent or guardian.

For further information contact Gary Reeves, Secretary, MG 14 Association Inc. on 0439014026 or email at reeves_gary@outlook.com

Visit our website www.mg14.com for accommodation information as well as entry forms and NSW MG14 Association boat registration and membership forms.

Attachment A

Regatta Site and Racing Area

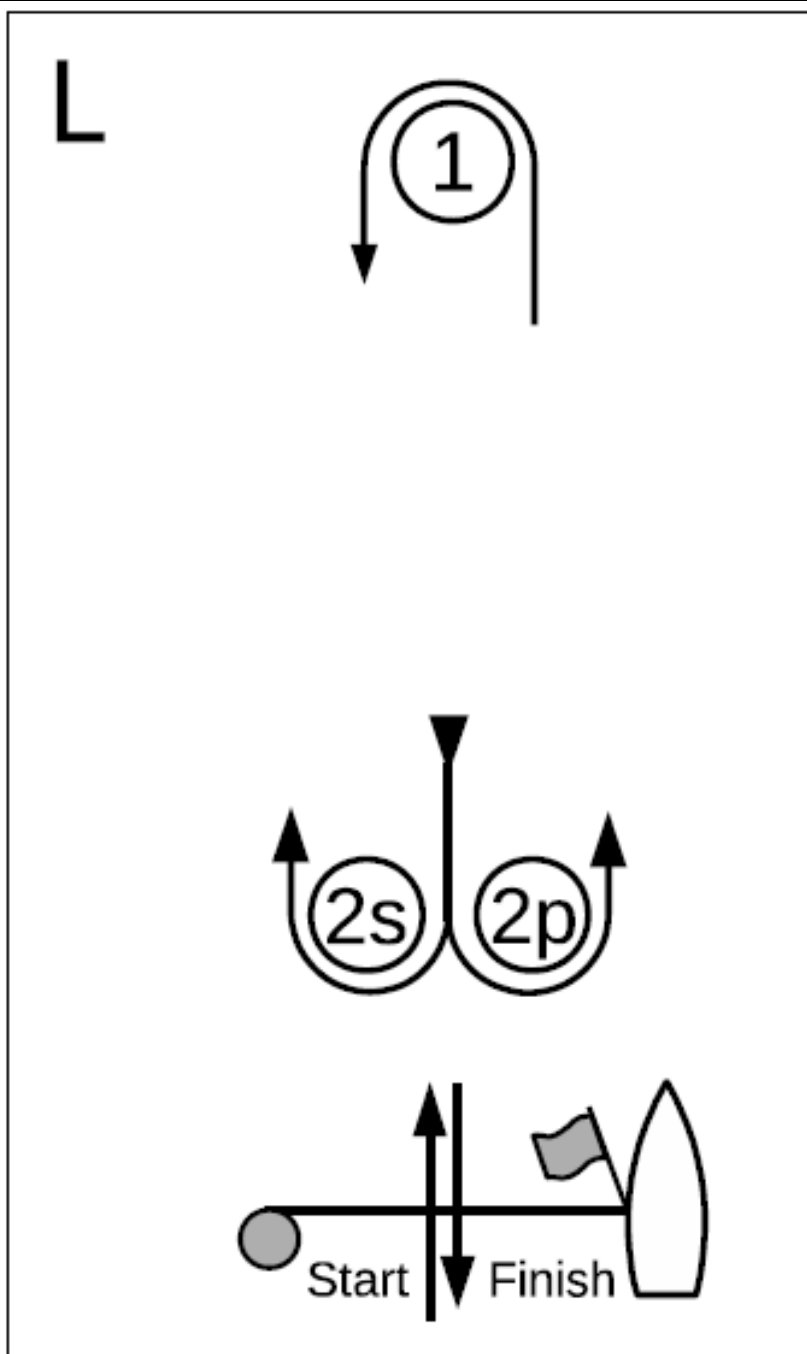


Attachment B

Race Diagrams

Windward/Leeward, Leeward Finish

Signal	Mark Rounding Order
L2	Start – 1 – 2s/2p – 1 – Finish
L3	Start – 1 – 2s/2p – 1 – 2s/2p – 1 – Finish
L4	Start – 1 – 2s/2p – 1 – 2s/2p – 1 – 2s/2p – 1 – Finish



In the case that rounding mark 2s/2p is not deployed, the remaining mark must be taken to port.