



COURSES & MARK DESCRIPTIONS

NORTH EAST	
Start near Carter Island	
Botany (4)	S
Bonna Pt (12)	P
Yarra Bay (5)	P
Commons (2)	S
Taylor Bar (6)	S
Finish at StGSC	

SOUTH WEST	
Start near Carter Island	
Commons (2)	S
Taylor Bar (6)	P
Kyeemagh (8)	P
Ramsgate (7)	P
Botany (4)	S
Finish at StGSC	

EAST	
Start near Snadringham Point	
Kurnell (9)	P
Ramsgate (7)	S
Yarra Bay (5)	S
Finish at StGSC	

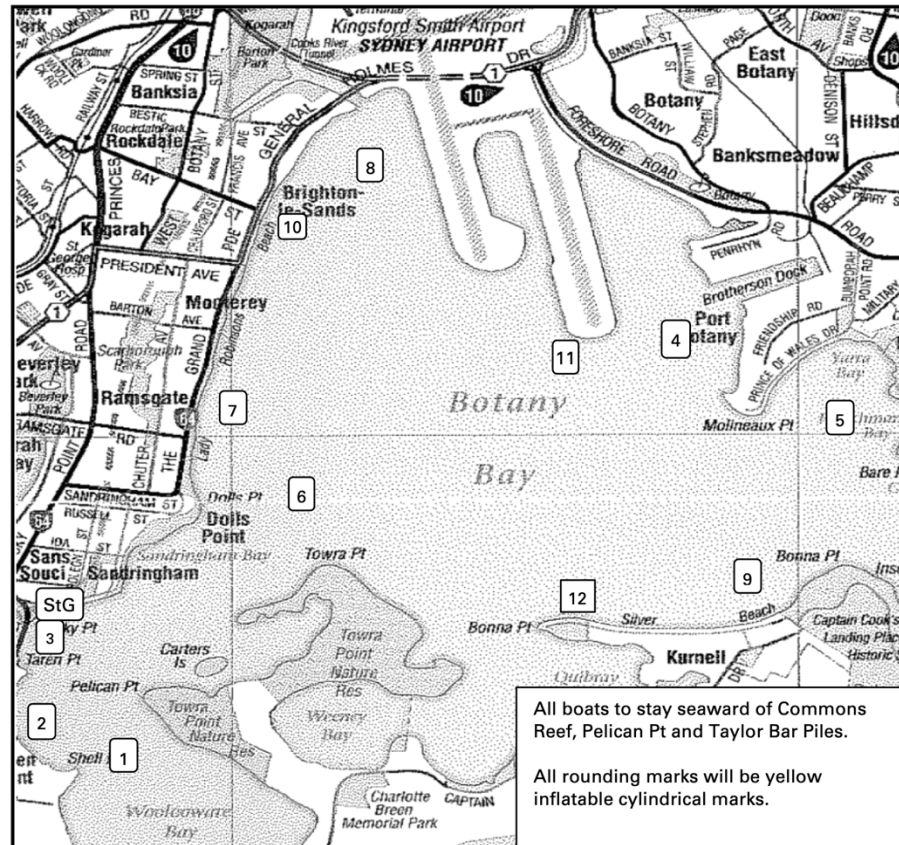
WEST	
Start near Carter Island	
Clubhouse (3)	P
Yarra Bay (5)	P
Ramsgate (7)	P
Kurnell (9)	S
Finish at StGSC	

SOUTH EAST	
Start near StGSC	
Woollooware (1)	P
Taylor Bar (6)	P
Brighton (10)	S
Bonna Pt (12)	S
Bighton (10)	S
Bonna Pt (12)	S
Finish at StGSC	

NORTH WEST	
Start near Woolloware	
Couhouse (3)	S
Taylor Bar (6)	S
Kurnell (9)	P
Kyeemagh (8)	P
Bonna Point (12)	S
Finish at StGSC	

SOUTH	
Start near Snadringham Point	
Woollooware (1)	S
Taylor Bar (6)	P
Kyeemagh (8)	S
Airstrip (11)	S
Bonna Pt (12)	S
Kyeemagh (8)	P
Taylor Bar (6)	S
Finish at StGSC	

NORTH	
Start near Woolloware	
Taylor Bar (6)	P
Kyeemagh (8)	P
Bonna Pt (12)	P
Kyeemagh (8)	P
Taylor Bar (6)	S
Finish at StGSC	



MARK DESCRIPTIONS			
1	Woollooware	8	Kyeemagh
2	Commons	9	Kurnell
3	Clubhouse	10	Brighton
4	Botany	11	Airstrip
5	Yarra Bay	12	Bonna Pt
6	Taylor Bar		
7	Ramsgate	StG	StGSC